

P2 Firmware Update Guide

Release Date: March 30, 2026

1. Overview

This firmware update resolves the communication failure issue that may occur when connecting the P2 machine using LaserGRBL.

2. What's Included

- Fixed communication errors when connecting with LaserGRBL
 - Improved compatibility with third-party engraving software
-

3. Applicable Users

This update is recommended for:

- Orders shipped before March 30, 2026
 - Users who use LaserGRBL as their primary software
-

4. Preparation

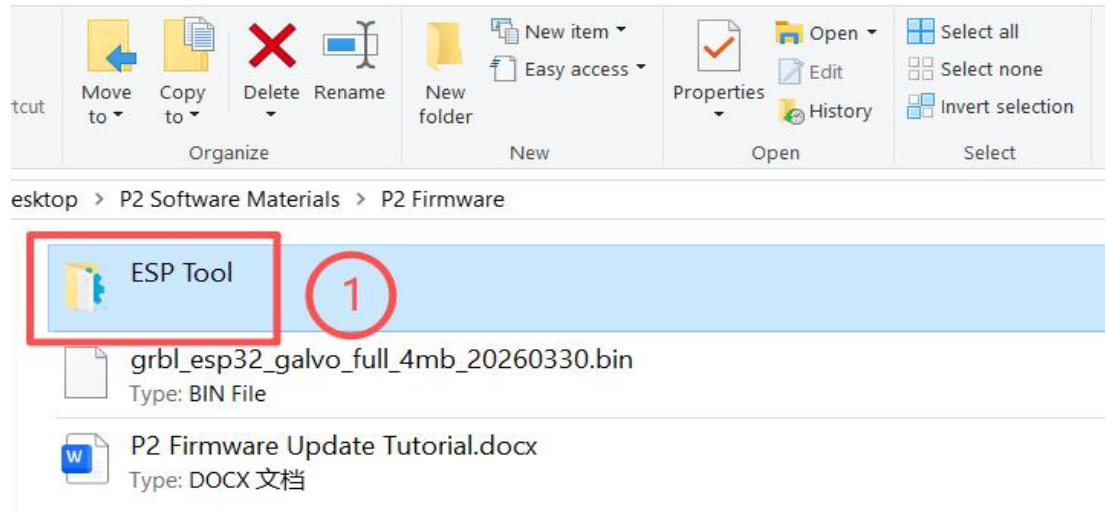
Before starting the update, please ensure:

- The machine is properly powered on
 - USB cable is securely connected
 - Computer is functioning normally
 - Do not disconnect power during the update
-

5. Update Steps

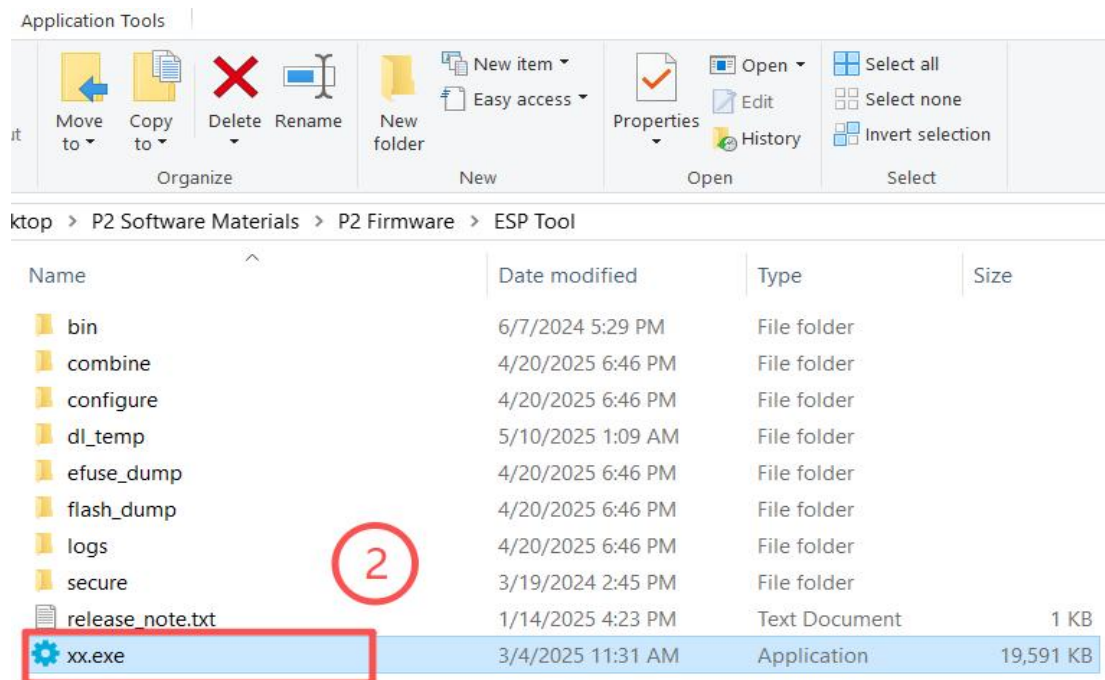
Step 1: Connect Device

Power on the P2 machine, connect it to your computer using a USB cable, and open the **ESP Tool**.



Step 2: Launch Tool

Select and open the firmware tool file “**xx.exe**”.



Step 3: Select Chip Type

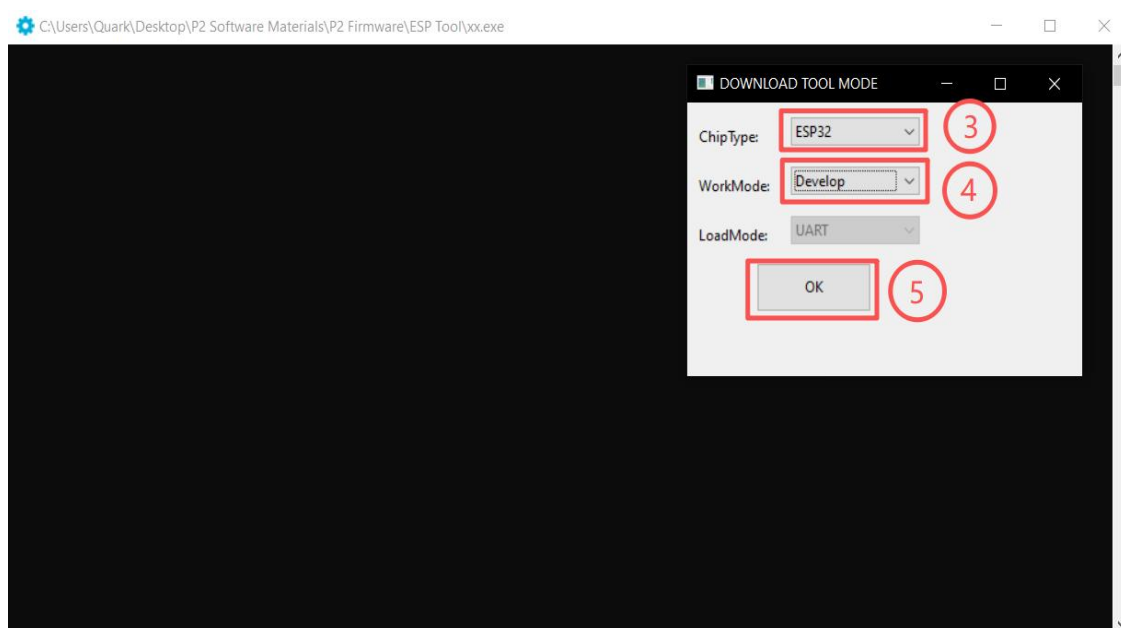
Set Chip Type to ESP32.

Step 4: Select Work Mode

Set Work Mode to Develop.

Step 5: Confirm Settings

Click “OK” to confirm and proceed.



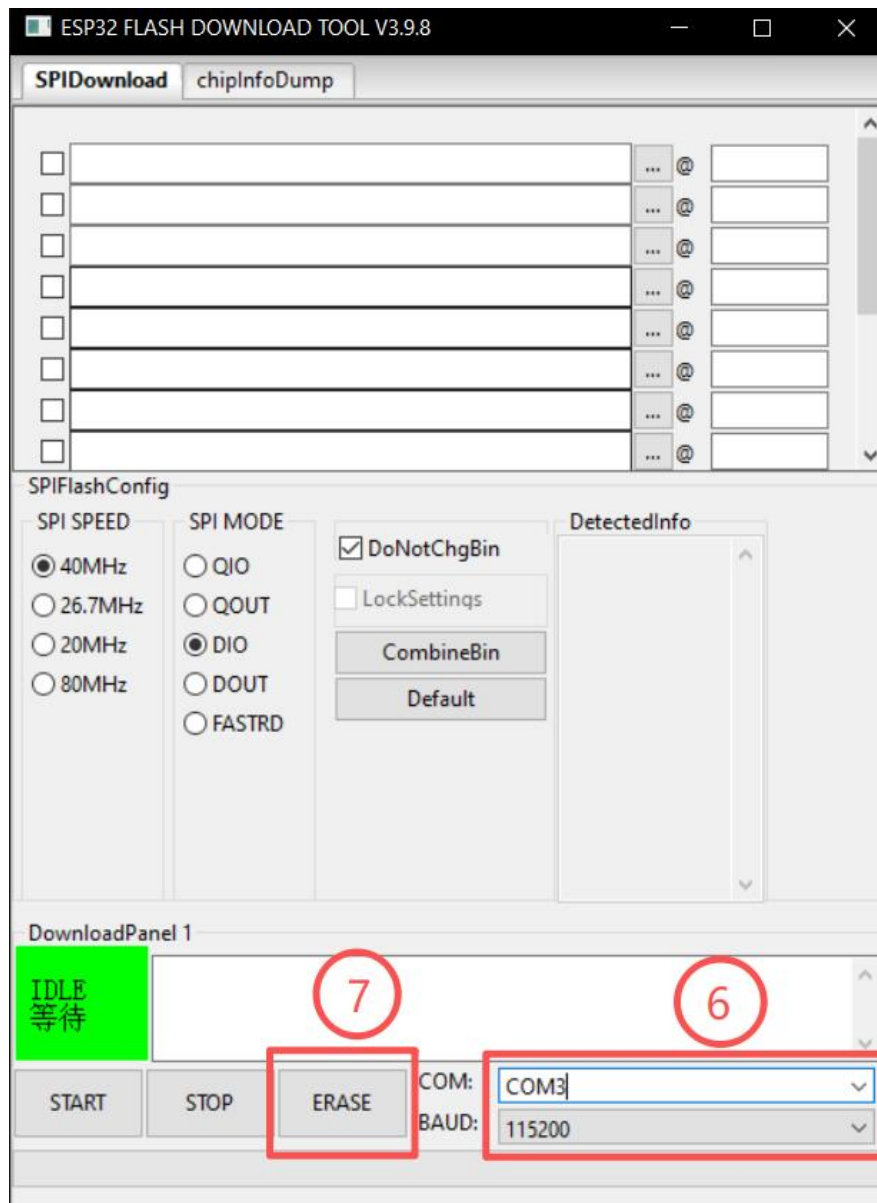
Step 6: Select Port & Set Parameters:

Select the **COM port** connected to the P2 machine. Set the **baud rate** to **115200**.

Choose the correct COM port by following these guidelines:

- Close engraving software such as LightBurn or LaserGRBL to prevent port conflicts
- Disconnect any unnecessary USB devices
- Keep only the USB connection to the P2 machine to ensure accurate port identification

Step 7: Erase Firmware: Click “ERASE” and wait for the system to complete the process.

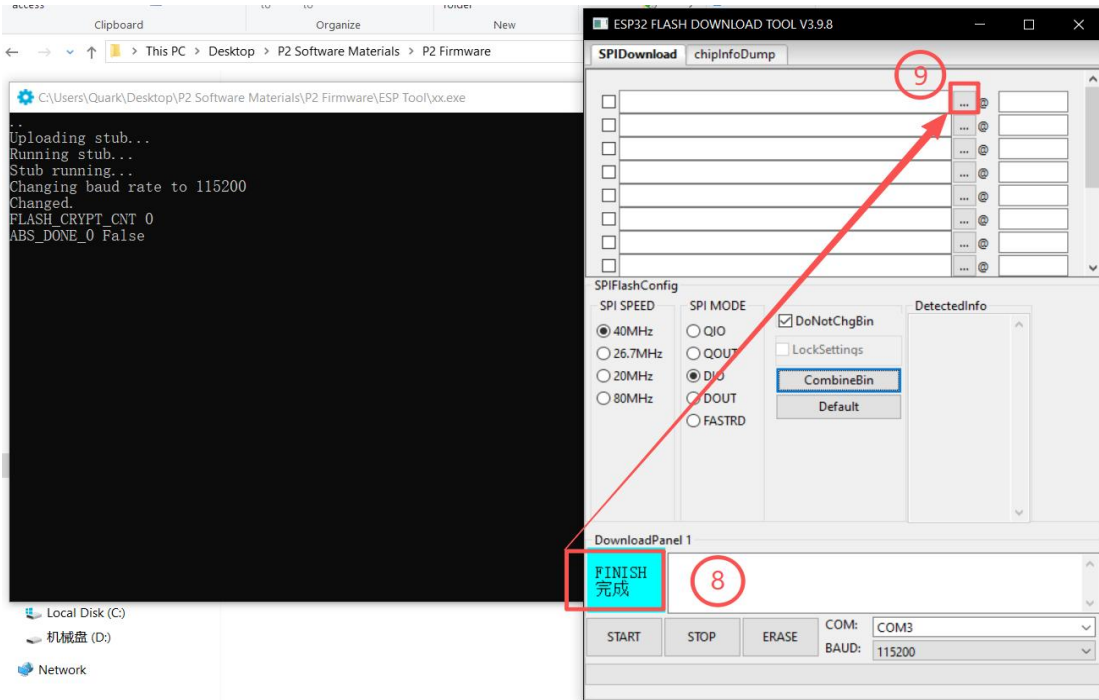


Step 8: Erase Completed

Once the old firmware has been completely erased, **“FINISH”** will be displayed on the screen.

Step 9: Load Firmware File

Click the “...” button located in the first row at the top-right corner to select the firmware file for the next step.

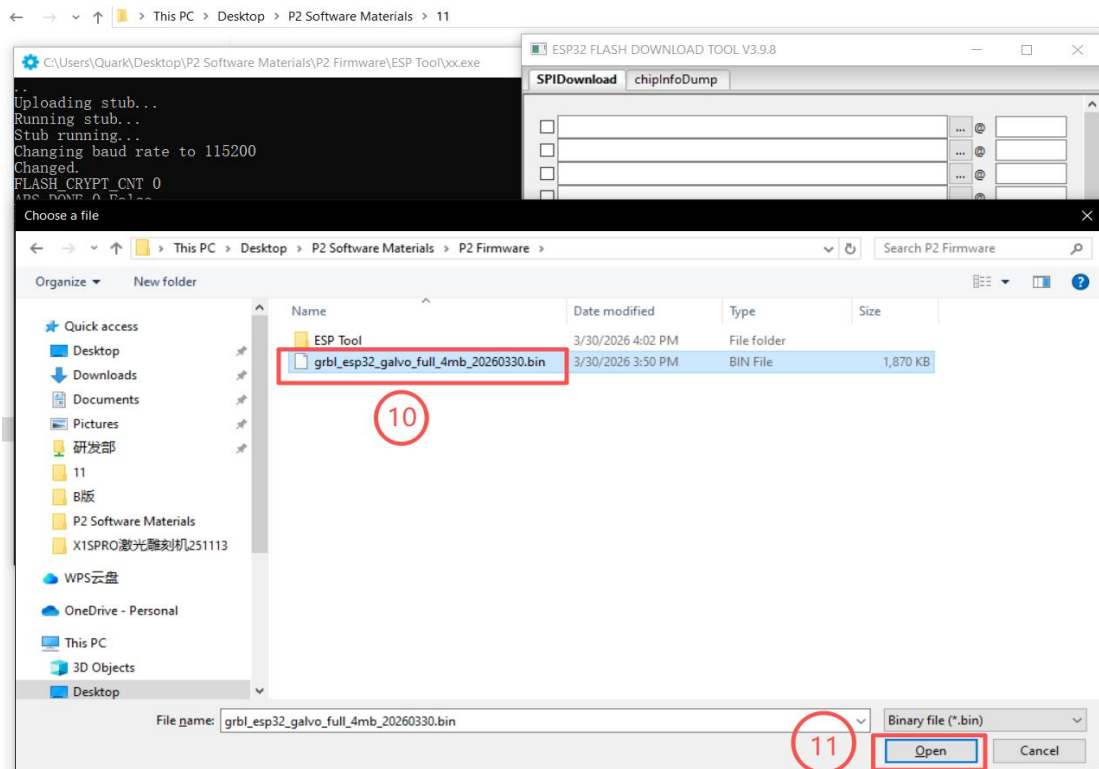


Step 10: Select Firmware File

Select the firmware file that needs to be updated.

Step 11: Confirm Selection

Click "Open" to load the selected firmware file.



Step 12: Enable Flash Option

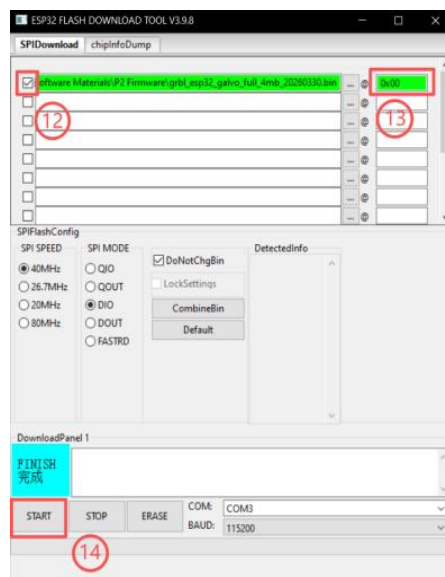
Click the checkbox in the top-left corner to enable the firmware flashing option.

Step 13: Set Flash Address

Enter "0x00" in the address field at the top-right corner.

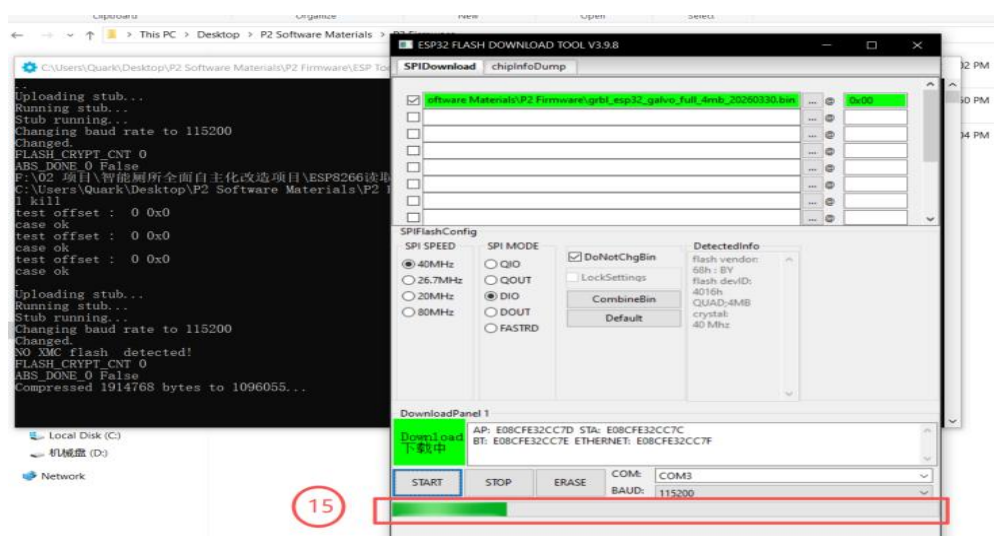
Step 14: Start Flashing

Click "START" to begin the firmware update.



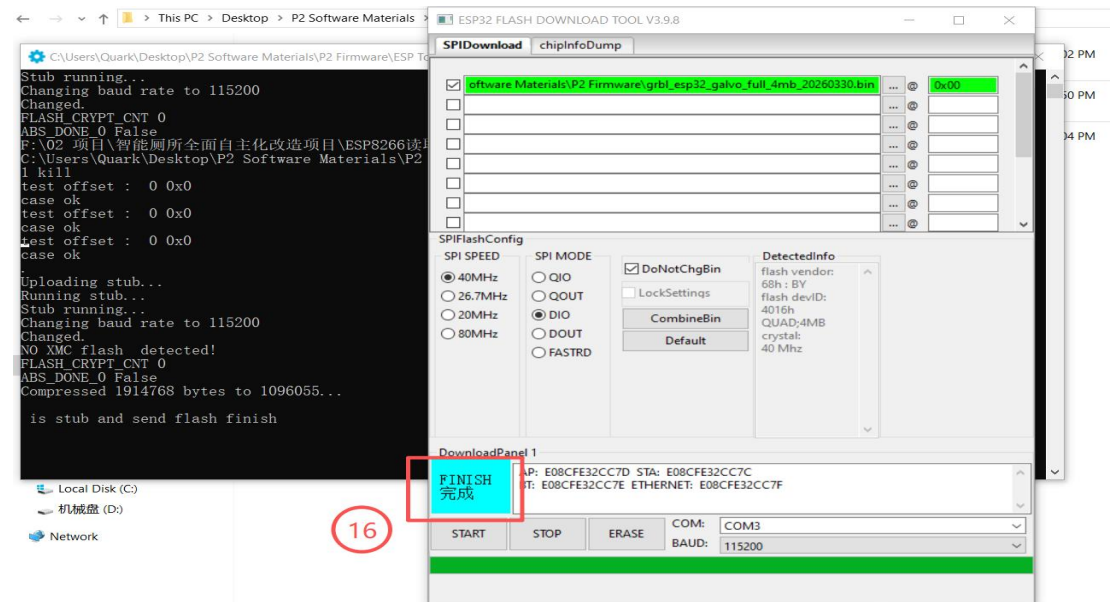
Step 15: Updating in Progress

The firmware is now being updated. Please do not perform any other operations or disconnect the device during this process.



Step 16: Update Completed

Wait until the progress bar reaches 100% and **“FINISH”** is displayed on the screen. The firmware update is now complete.



Step 17: Restart Device

After the update is complete, disconnect and reconnect the power cable and USB cable to restart the P2 machine.

6. Important Notes

- This update is optional if you are not using LaserGRBL
- Interrupting the update may cause firmware damage
- Always use the correct firmware version

7. Troubleshooting

If the update fails:

- Reconnect the USB cable
- Restart the software and device
- Ensure correct COM port is selected